

THANKS FOR CHOOSING ONE OF OUR KITS!

This assembly guide has been designed taking into account the common issues that we often find people experience in our workshops. The order in which the components are placed on the board is meant to make assembly as easy as possible.

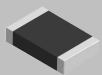
Some steps are not obvious, so even if you're an experienced DIYer, please take the time to read the steps thoroughly before starting.

If this is your first project, please read this article before you start assembling the kit:


www.befaco.org/howto/

GOOD LUCK!

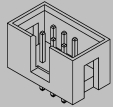
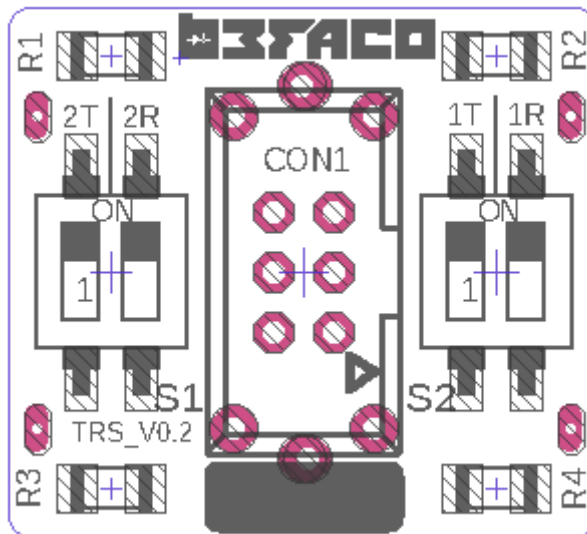
RESISTORS			
Qty	Value	Code	Name on PCB
4	330 Ohm	3300	R1, R2, R3, R4



SLIDE SWITCH
Place and solder the mini slide switches at the positions on the PCB marked as S1 and S2. Mind the orientation of the switch, check the image below.



IDC CONNECTOR		
Solder the IDC connector. Orientation is marked by the notch on silkscreen, also the small arrow on the connector must be on the side with the thick white line or an arrow.		
Qty	PINs	Name on PCB
1	2x3	CON1

FRONT PANEL COMPONENTS MOUNTING TIPS:

Now we will proceed to mount the jacks. This part of the assembly is **CRITICAL**. Please take your time and read the instructions carefully.

These components must **NOT** be soldered until they are placed on the PCB and fully attached to the front panel.

There are two reasons for this:

The height of the panel components are not all the same. Because of this, if not attached properly before soldering, they will not stay properly seated against the panel. This might cause mechanical stress reducing their life expectancy and in the worst case cause them to break.

The second reason is that it is very difficult to align the components to the holes if the panel is not positioned prior to soldering.

MINI-JACKS

Trim the mid leg (switch pin) of the mini-jacks, if not, the jacks can't be placed straight, you can trim the pins of the connector to place better those. Jacks share GND pin (Sleeve) so you should place both pins on the same hole.

Place all the mini-jacks onto the PCB ensuring they are on the silkscreen side, but **don't solder yet**.

FRONT PANEL

Please check the orientation of the panel, You should read befaco on the upper part of the pcb when you turn the module.

Attach the **front panel** adjusting the parts one by one if necessary until they fit. At this point a pair of fine tweezers can be helpful.

To finish:

- Secure the **Mini-jacks** to the panel. (We provide 4 Red and 4 Black nuts so you can code your inputs and outputs as you need)
- Ensuring all of the above parts are flush with the panel then you can finally **solder** them!
- Connect the **ribbon cable to the case connector**. ([Refer to the user manual](#)).

ENJOY YOUR NEW BEFACO MODULE!