

1U OUT

USER MANUAL



b3faco

POWERING THE
MODULE

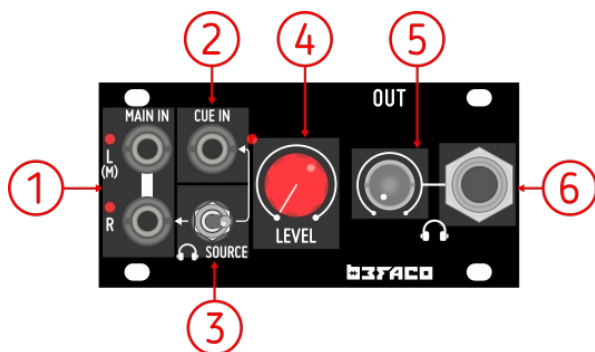
THANKS FOR PURCHASING A MODULE FROM BEFACO!
BEFORE YOU PLUG THIS MODULE IN...

1. **Disconnect your cabinet from the mains.**
2. **Triple check the power cord polarity.** The coloured line on the cable (pin number one) is the -12V rail.
3. If you plug the module backwards you might burn it out and unfortunately this is not covered by the warranty.
4. If you have any questions about this product please send them to: support@befaco.org



INTRODUCTION | OUT 1U

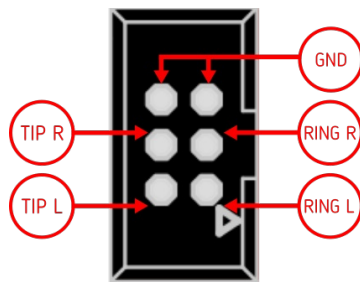
Out is a 1U stereo output module designed to convert audio signals from your modular to line levels. The module is designed to be used on cases with onboard Jack connectors like the Befaco 7U Case or Intellijel 7U and Palette series, as it uses the same pinout. The module also includes a high quality Headphone amplifier with an auxiliar monitoring CUE input.

MODULE
REFERENCE | PANEL OVERVIEW

1. **Stereo Inputs**
Main audio inputs for both channels L and R with dedicated clipping LEDs. The signal present at this inputs is sent through the OUT connector located at the back of the module. AC Coupled.
2. **CUE Input**
Auxiliar monitoring input. This input is present only at the Headphones output if it is selected with the Headphone Source Switch.
3. **Headphone Source Switch**
Selects which source will be monitored at the Headphones output: Main or Cue Input.
4. **Level Pot**
Manual control of the output volume.
5. **Headphones Pot**
Manual control of the Headphones output volume.
6. **Headphones Output**
Output of the Headphones amplifier circuit.

FEATURES | CONNECTING THE UNIT TO A CASE

Out 1U output can be linked to the rear Jack connectors found in cases like the Befaco 7U Case or Intellijel 7U and Palette series. To do that, connect both ends of the provided 2x3 ribbon cable to both the "OUT" socket placed at the back of the module and the socket of your case (please refer to the User Manual of your case to identify the socket linked to the rear jacks).



1U Out Output Pinout

MISCELANEA | SPECS & CREDITS

- * **Size:** 16HP
- * **Depth:** 30mm
- * **+12v:** 30mA
- * **-12v:** 30mA

* **Design:** Pascual Rocher